

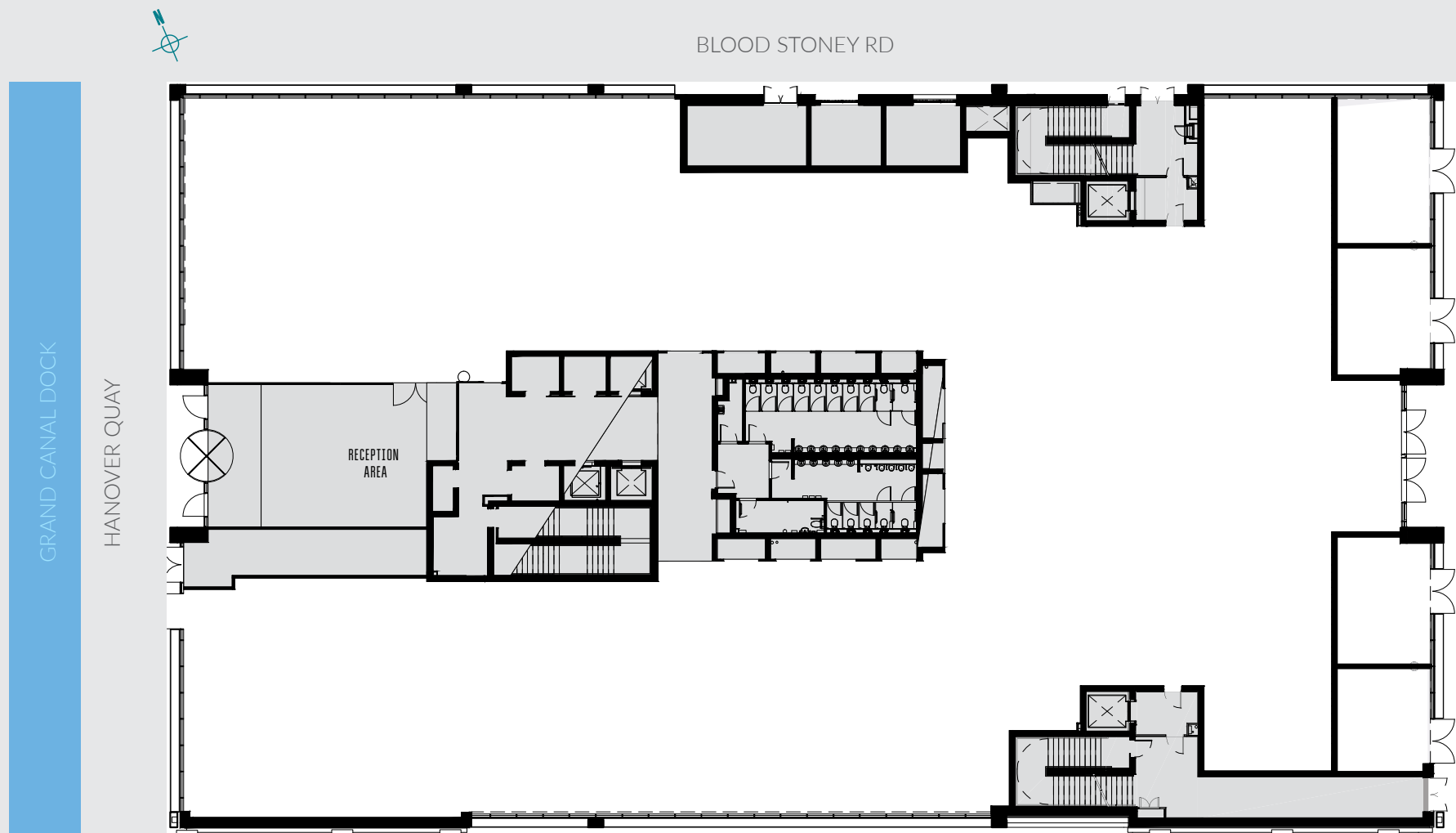


FIVE

HANOVER QUAY

DUBLIN 2

FLOOR PLANS



GROUND FLOOR

FLOOR AREA
2,195 sq. m.
23,630 sq. ft.

GROUND	2,195 sq. m.	23,630 sq. ft.
FIRST	2,277 sq. m.	24,509 sq. ft.
SECOND	2,408 sq. m.	25,915 sq. ft.
THIRD	2,408 sq. m.	25,915 sq. ft.
FOURTH	2,408 sq. m.	25,915 sq. ft.
FIFTH	2,181 sq. m.	23,474 sq. ft.
SIXTH	1,110 sq. m.	11,944 sq. ft.

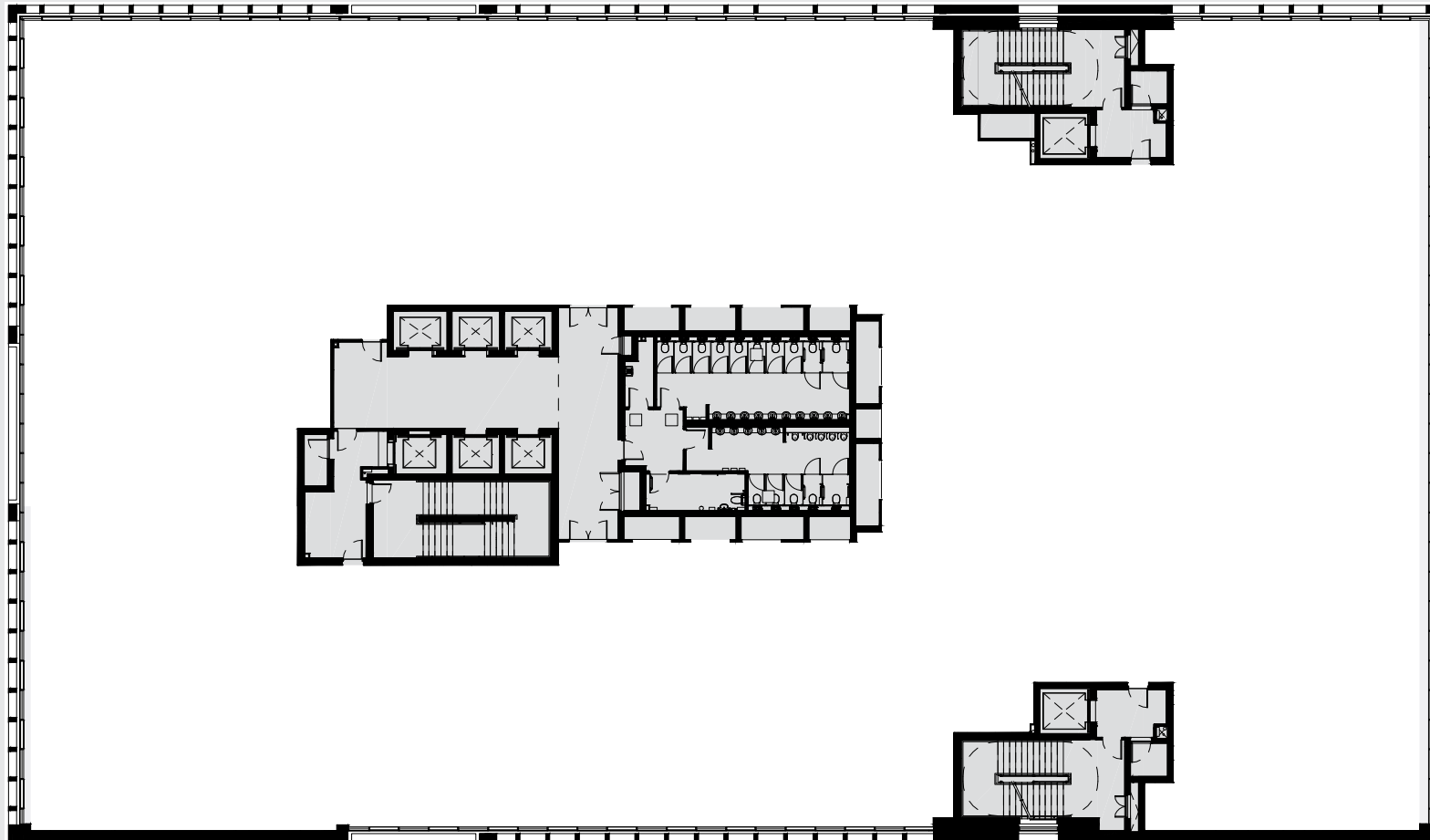
TOTAL
14,987 SQ. M.
161,300 SQ. FT.



BLOOD STONEY RD

GRAND CANAL DOCK

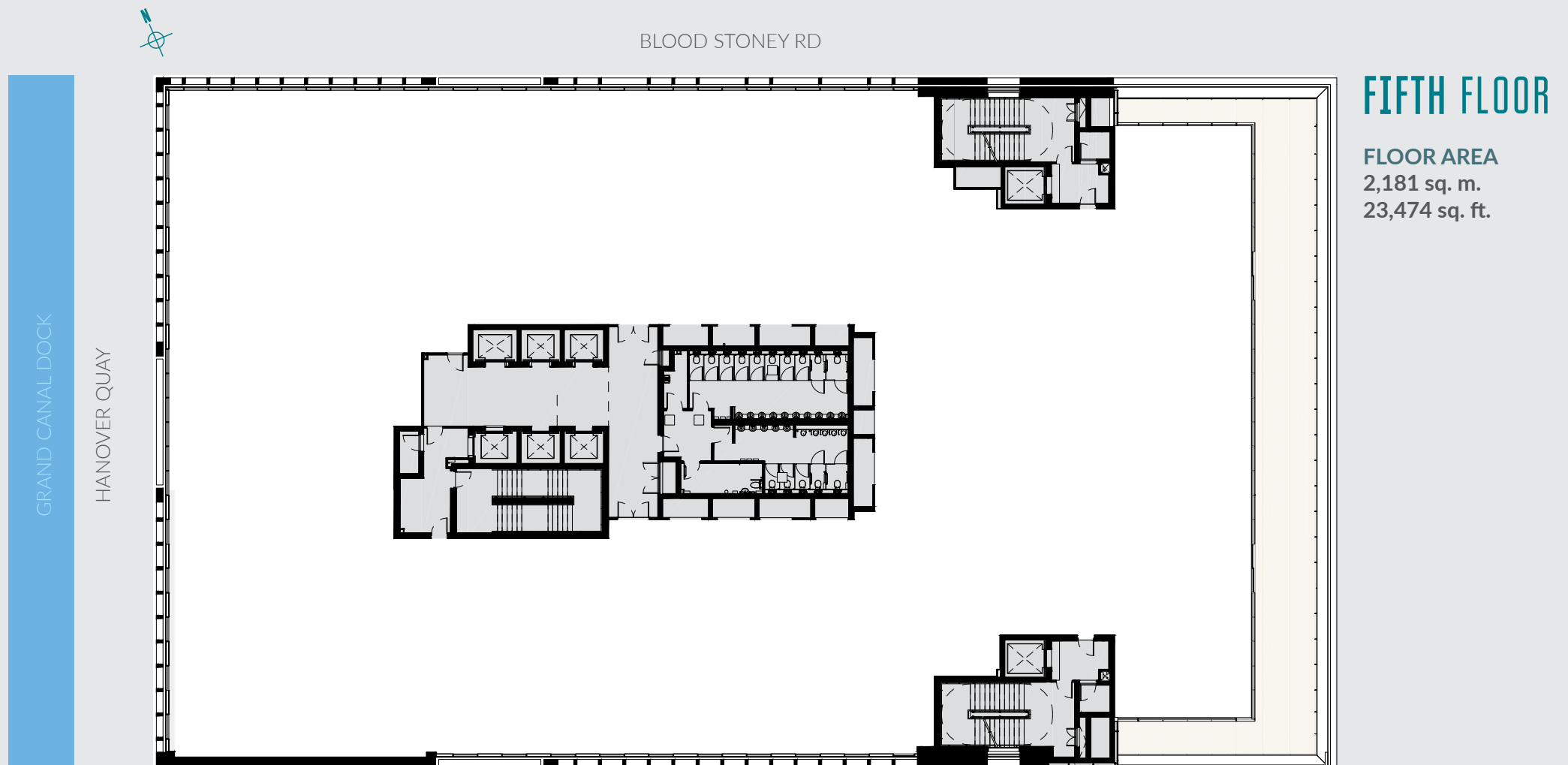
HANOVER QUAY



TYPICAL FLOOR

FLOOR AREA
2,408 sq. m.
25,915 sq. ft.

FLOOR PLANS



GROUND	2,195 sq. m.	23,630 sq. ft.
FIRST	2,277 sq. m.	24,509 sq. ft.
SECOND	2,408 sq. m.	25,915 sq. ft.
THIRD	2,408 sq. m.	25,915 sq. ft.
FOURTH	2,408 sq. m.	25,915 sq. ft.
FIFTH	2,181 sq. m.	23,474 sq. ft.
SIXTH	1,110 sq. m.	11,944 sq. ft.

TOTAL

14,987 SQ. M.

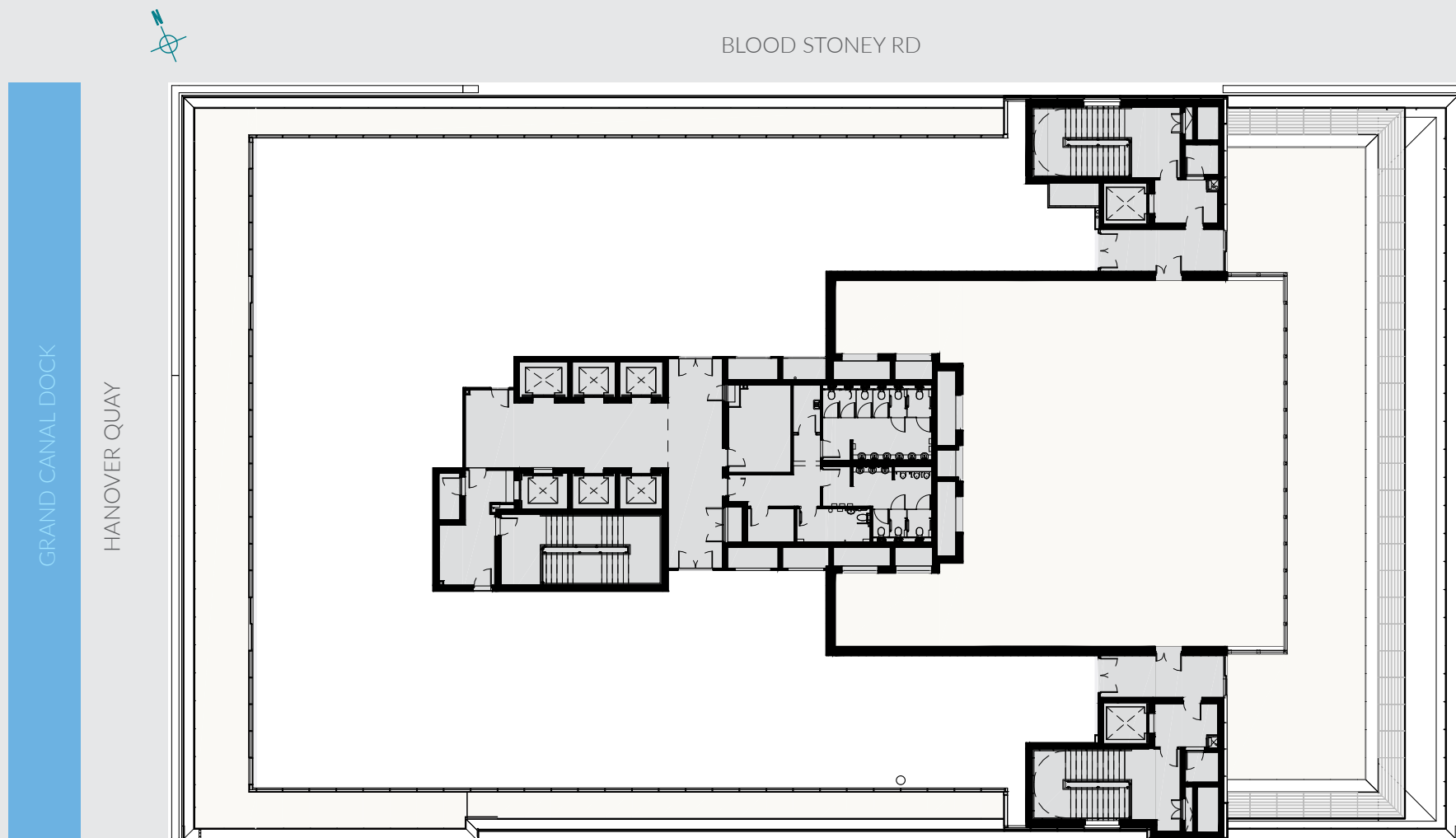
161,300 SQ. FT.

SIXTH FLOOR

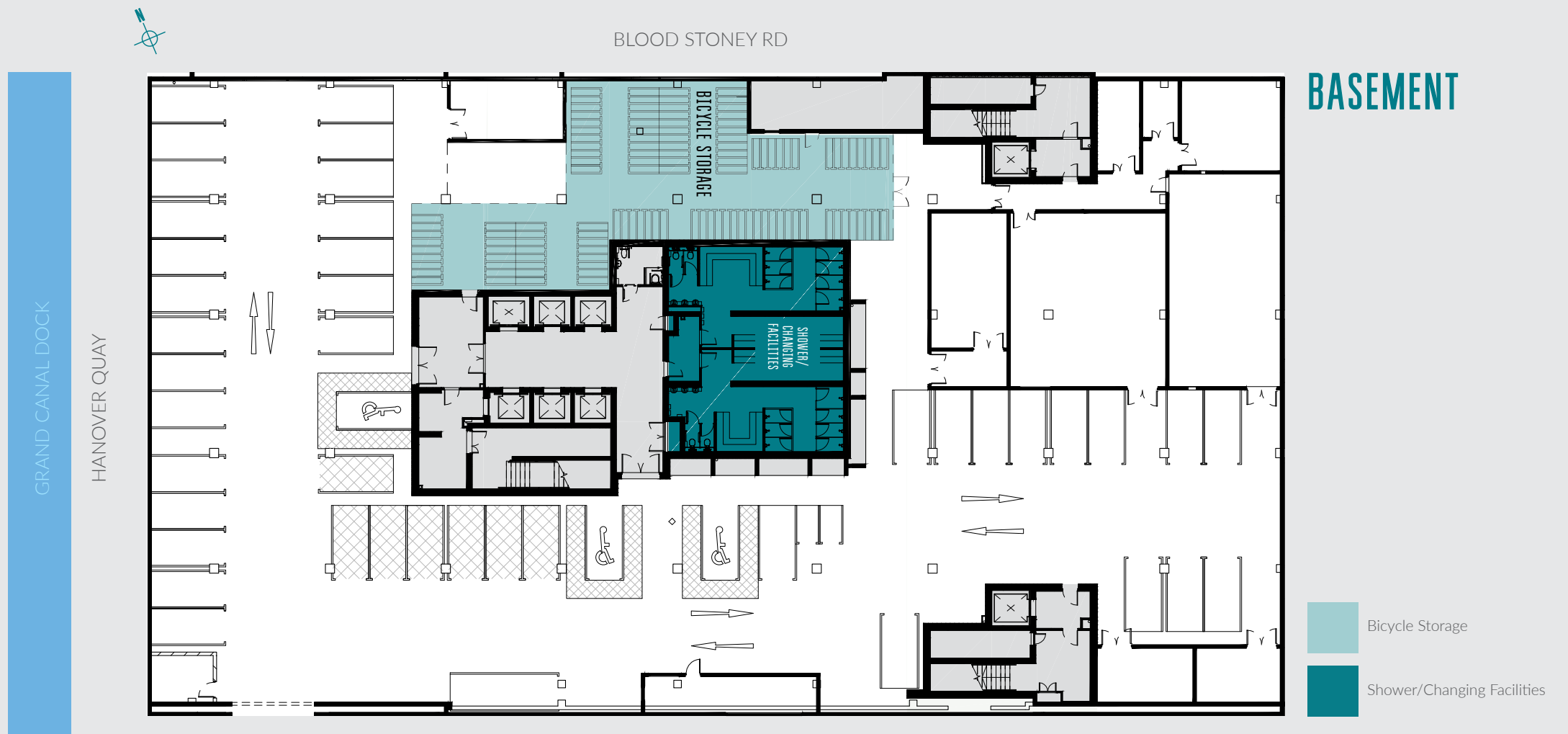
FLOOR AREA

1,110 sq. m.

11,994 sq. ft.



FLOOR PLANS

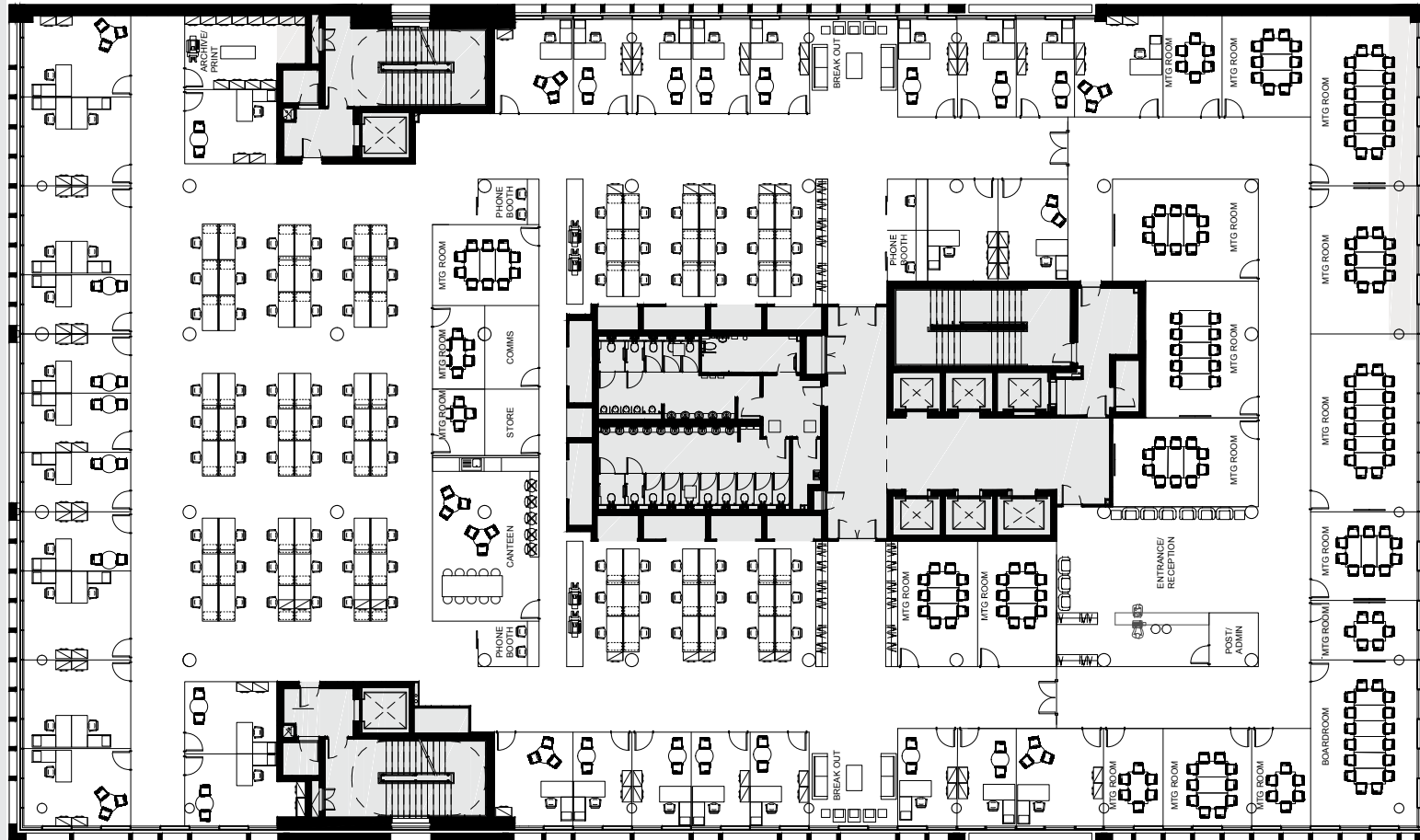


GRAND CANAL DOCK

HANOVER QUAY



BLOOD STONEY RD



OCCUPANCY
RATIO 1:12

Number of offices

33

Number of meeting rooms

19

Open-plan workstations

90

Total headcount

123

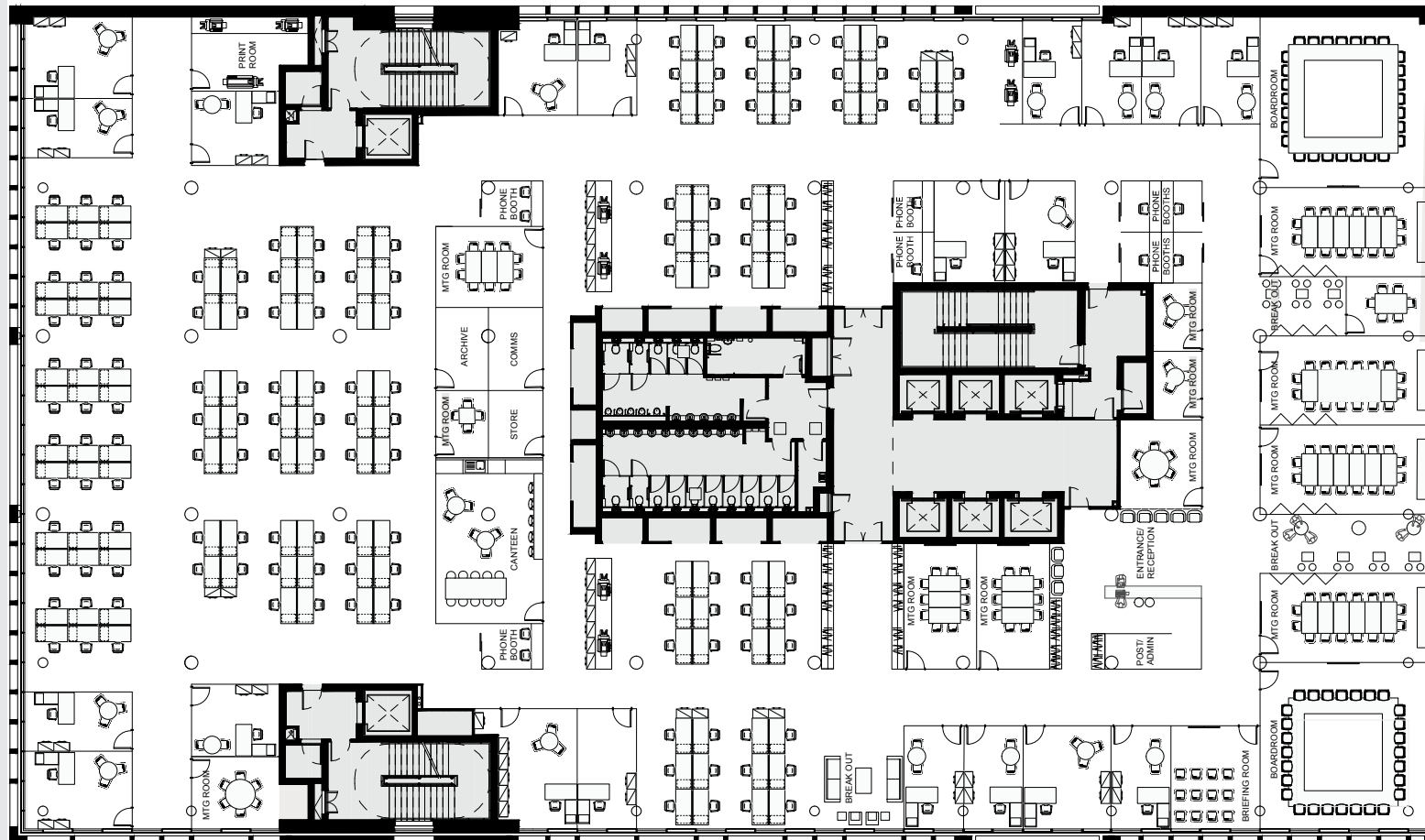
TEST FIT

GRAND CANAL DOCK

HANOVER QUAY



BLOOD STONEY RD



OCCUPANCY
RATIO 1:10

Number of offices

20

Number of meeting rooms

16

Open-plan workstations

144

Total headcount

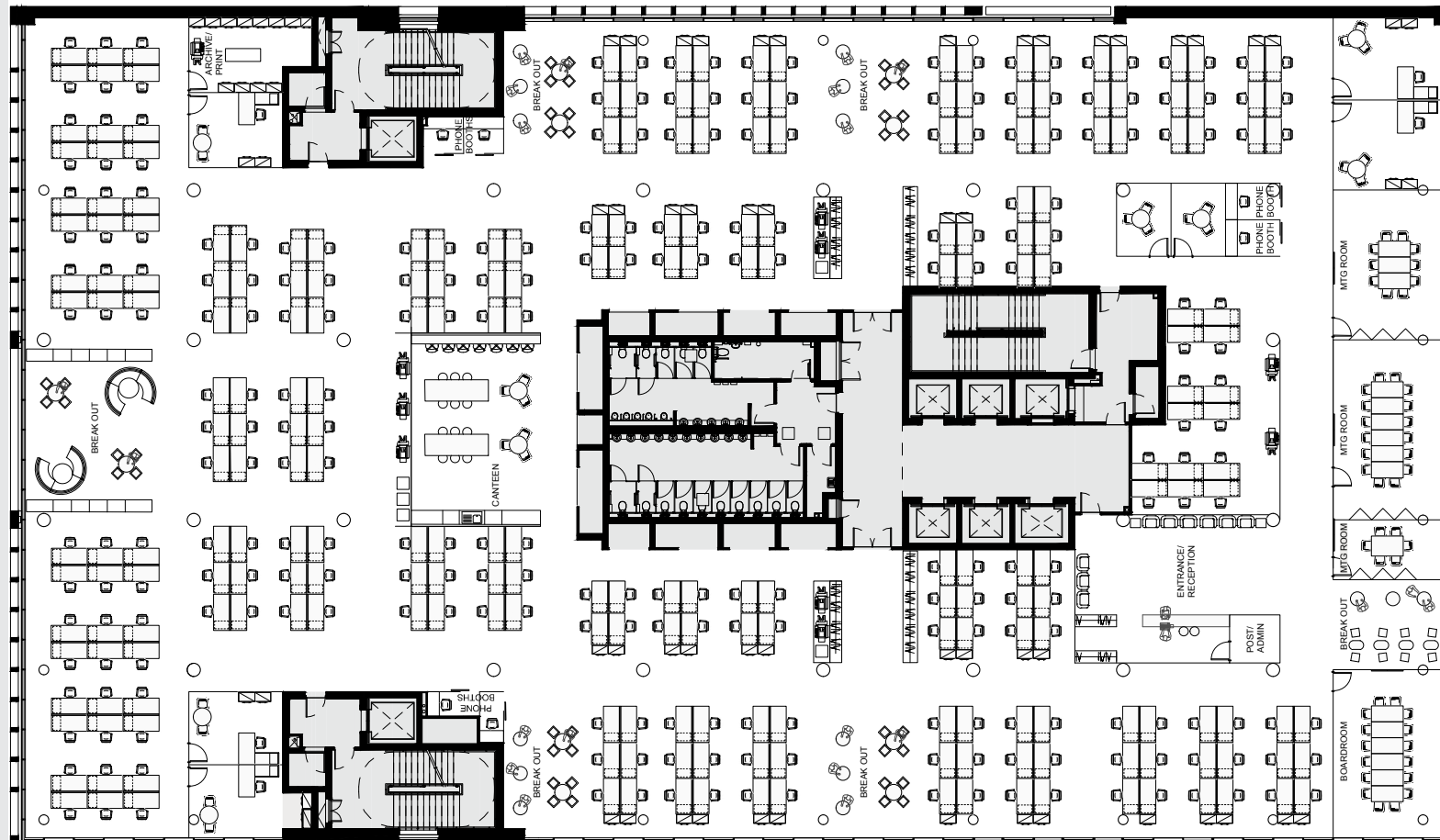
164

GRAND CANAL DOCK

HANOVER QUAY



BLOOD STONEY RD



OCCUPANCY
RATIO 1:8

Number of offices

5

Number of meeting rooms

6

Open-plan workstations

262

Total headcount

267



FIVE

HANOVER QUAY

DUBLIN 2